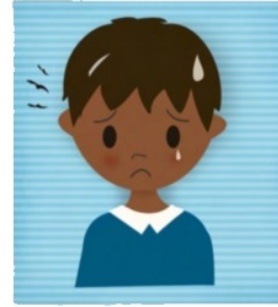
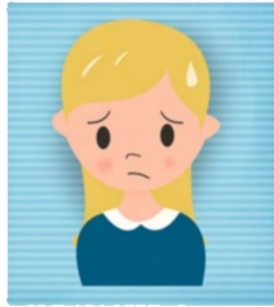


# WHEN IS YOUR CHILD TOO SICK FOR SCHOOL?



## SEND ME TO SCHOOL IF . . .

- I have a runny nose or just a little cough, but no other symptoms.
- I haven't taken any fever reducing medicine for 24 hours, and I haven't had a fever during that time.
- I haven't thrown up or had any diarrhea for 24 hours.

## KEEP ME AT HOME IF . . .

- I have a temperature higher than 100.4 degrees.
- I'm throwing up or have diarrhea.
- My eyes are pink and crusty.

## CALL THE DOCTOR IF . . .

- I have a temperature higher than 101.4 degrees for more than two days.
- I've been throwing up or have diarrhea for more than two days.
- I've had the sniffles for more than a week, and they aren't getting better.
- I still have asthma symptoms after using my asthma medication.

**OUR POLICY:** Little Treasures Preschool values the health and safety of all students. We ask parents to use good judgement when bringing their child to preschool. If your child is sick, or you think your child may be sick, please keep him or her home. If teachers or administrators are concerned about your child's health or if a child becomes sick at school, the child will be separated from peers. Parents or a listed emergency contact will be notified to pick the child up as soon as possible. **If a child has been picked up from preschool because of illness, the child may not return to the center for at least 24 hours without written permission from a doctor.**

**It is against licensing regulations to have children at the center with a fever (100+ degrees), diarrhea, vomiting, or contagious illnesses (including but not limited to strep, pink eye, impetigo, chicken pox, or measles).**

**In order for Little Treasures personnel to be able to administer medication – even over-the-counter medications – a medical plan completed and signed by a physician must be on file.**